
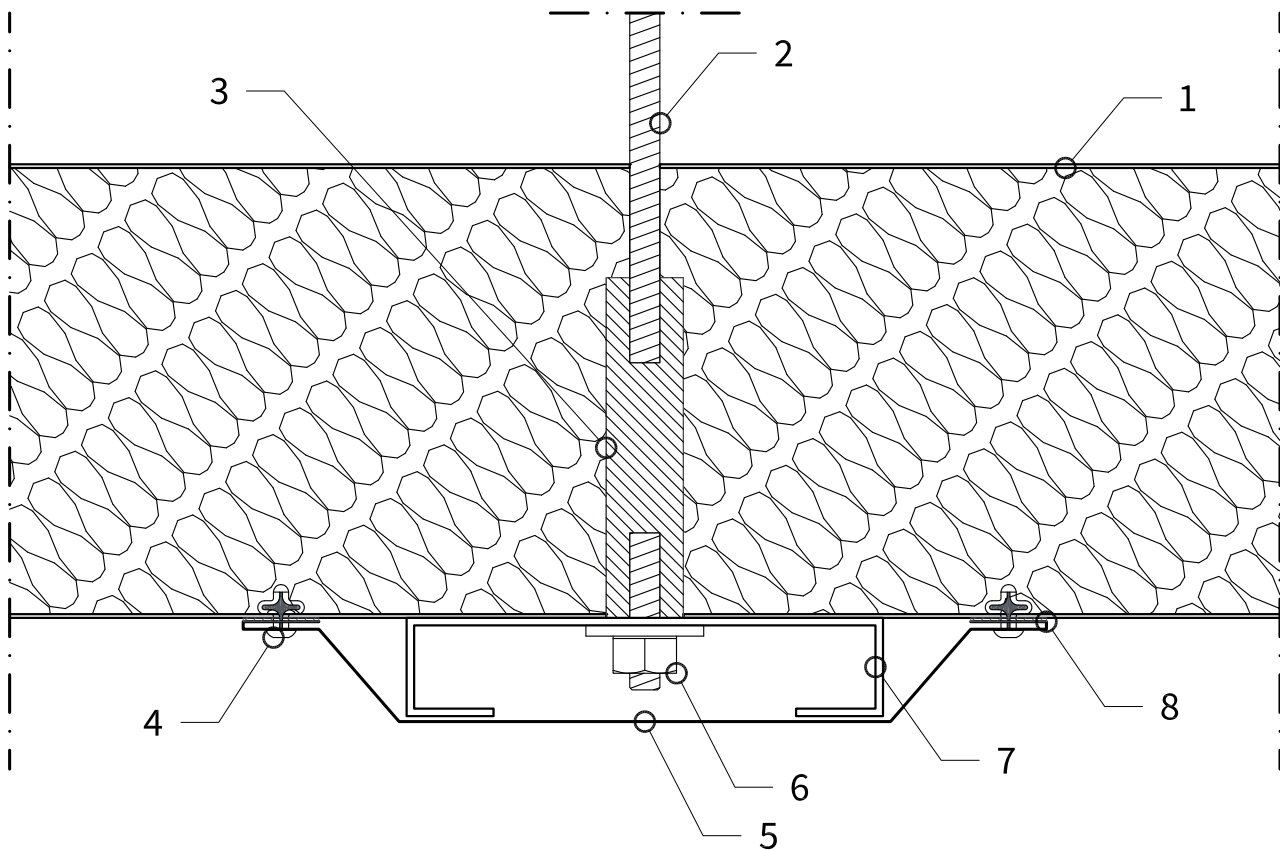


| | | | |
|---|--------------|--|-----------|
| Description FRIGO PANELS DETAIL Vertical Section Ceiling hanger | |  | |
| Scale | Drawing code | Date | Rev. date |
| 1:2 | TD_C04 | 16.05.2016 | |
| | | Drawn by | Rev. |
| | | ISOPAN | - |



Legend

| | | | |
|----|--------------------|----|--|
| 01 | ISOPAN Frigo Panel | 09 | |
| 02 | M10 threaded rod | 10 | |
| 03 | Teflon sleeve | 11 | |
| 04 | Rivet | 12 | |
| 05 | Custom flashing | 13 | |
| 06 | 8x30 bolt | 14 | |
| 07 | Steel support | 15 | |
| 08 | Gasket | 16 | |

ATTENTION: the proposed solution does not constitute the project, and must be firstly assessed and evaluated by the designer and construction supervision. The designer is responsible for assessing the need to insert additional gasket and/or closing elements, even when not indicated in the drawing details. The property rights of this document belong to ISOPAN S.p.a.. The contents can't be reproduced without prior written permission by the author. To choose the type of fastening, please refer to the screw type choice sheet; To choose the screw length, please refer to the data sheet for the correct screw length).