

Description

PVC FLAT ROOF PANELS DETAIL

Vertical Section

Roof connection with wall on ridge side



Scale

1:5

Drawing code

TD_F04

Date

16.05.2016

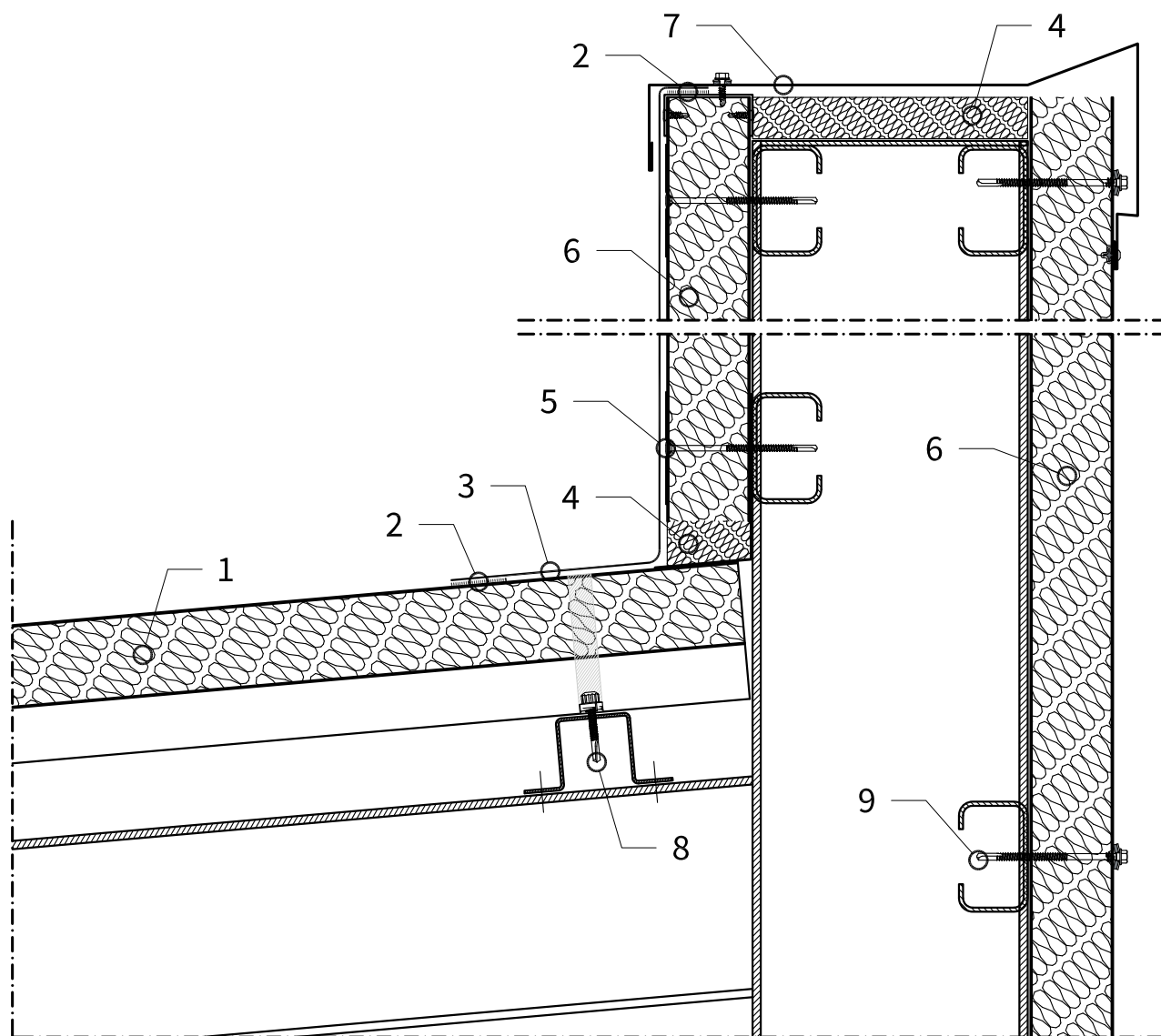
Rev. date

Drawn by

ISOPAN

Rev.

-



Legend

01 ISOPAN PVC Flat Roof Panel

02 5 cm welding

03 PVC layer

04 Proper on site insulation

05 Stress plate with flat head screw

06 ISOPAN Walls Panel

07 Custom flashing

08 Core-drill fastener

09 Fixing screw

10

11

12

13

14

15

16

ATTENTION: the proposed solution does not constitute the project, and must be firstly assessed and evaluated by the designer and construction supervision. The designer is responsible for assessing the need to insert additional gasket and/or closing elements, even when not indicated in the drawing details. The property rights of this document belong to ISOPAN S.p.a.. The contents can't be reproduced without prior written permission by the author. To choose the type of fastening, please refer to the screw type choice sheet; To choose the screw length, please refer to the data sheet for the correct screw length).