
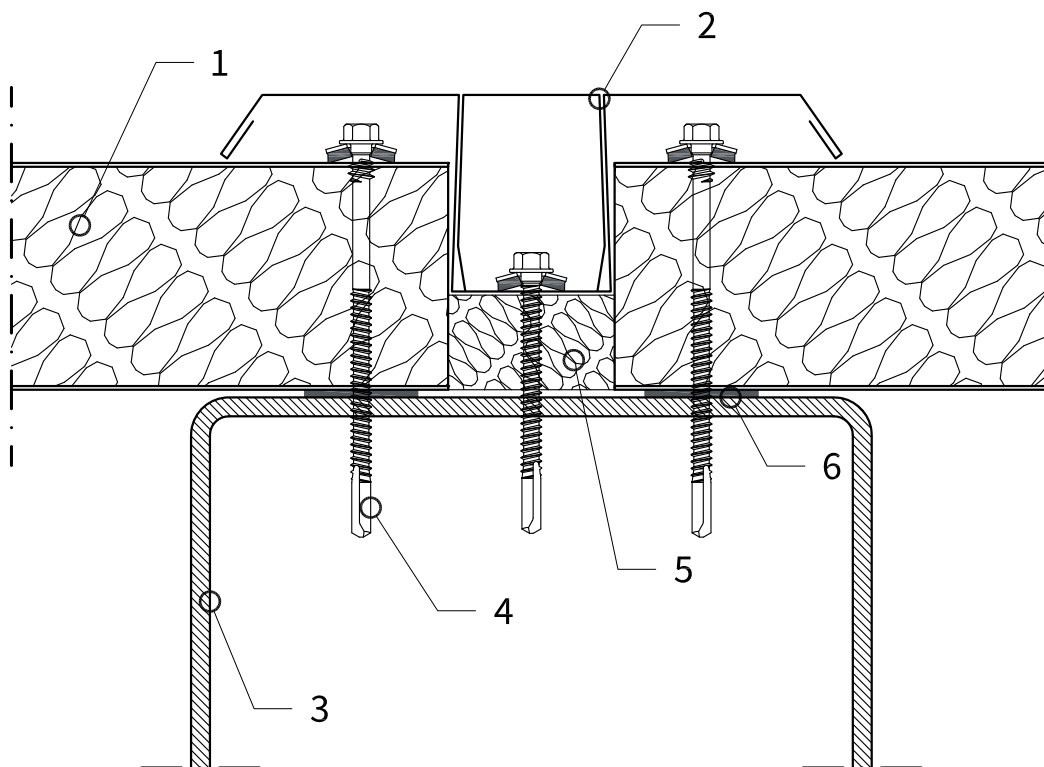


Description WALL PANELS DETAIL Horizontal Section Panel to panel vertical junction			
Scale	Drawing code	Date	Rev. date
1:2	TD_W11	16.05.2016	
		Drawn by	Rev.
		ISOPAN	-



Legend

01	ISOPAN Walls Panel
02	Joint cover flashing (ISOL53)
03	Steel support
04	Fixing screw
05	Mineral wool insulation
06	Gasket
07	
08	

09	
10	
11	
12	
13	
14	
15	
16	

ATTENTION: the proposed solution does not constitute the project, and must be firstly assessed and evaluated by the designer and construction supervision. The designer is responsible for assessing the need to insert additional gasket and/or closing elements, even when not indicated in the drawing details.
 The property rights of this document belong to ISOPAN S.p.a.. The contents can't be reproduced without prior written permission by the author. To choose the type of fastening, please refer to the screw type choice sheet; To choose the screw length, please refer to the data sheet for the correct screw length).