

### Panel to panel vertical junction (hidden fixing)



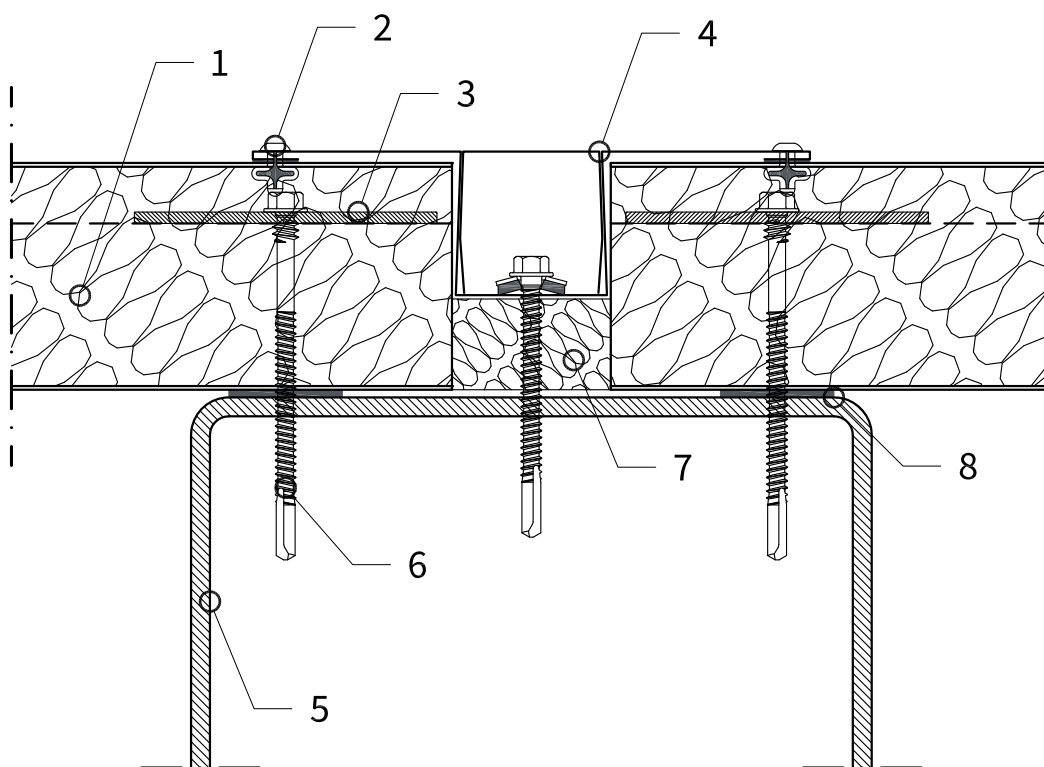
1:2

TD\_W12

16.05.2016

Rev.

ISOPAN



01 ISOPAN Walls Panel (hidden fixing)

## 02 Rivet and gasket

### 03 Load distribution steel plate

#### 04 Joint cover flashing (ISOL52)

05 Steel support

06 Fixing screw

07 Mineral wool insulation

08 Gasket

09

10

11

12

13

14

15

16

ATTENTION: the proposed solution does not constitute the project, and must be firstly assessed and evaluated by the designer and construction supervision. The designer is responsible for assessing the need to insert additional gasket and/or closing elements, even when not indicated in the drawing details. The property rights of this document belong to ISOPAN S.p.a.. The contents can't be reproduced without prior written permission by the author. To choose the type of fastening, please refer to the screw type choice sheet; To choose the screw length, please refer to the data sheet for the correct screw length).